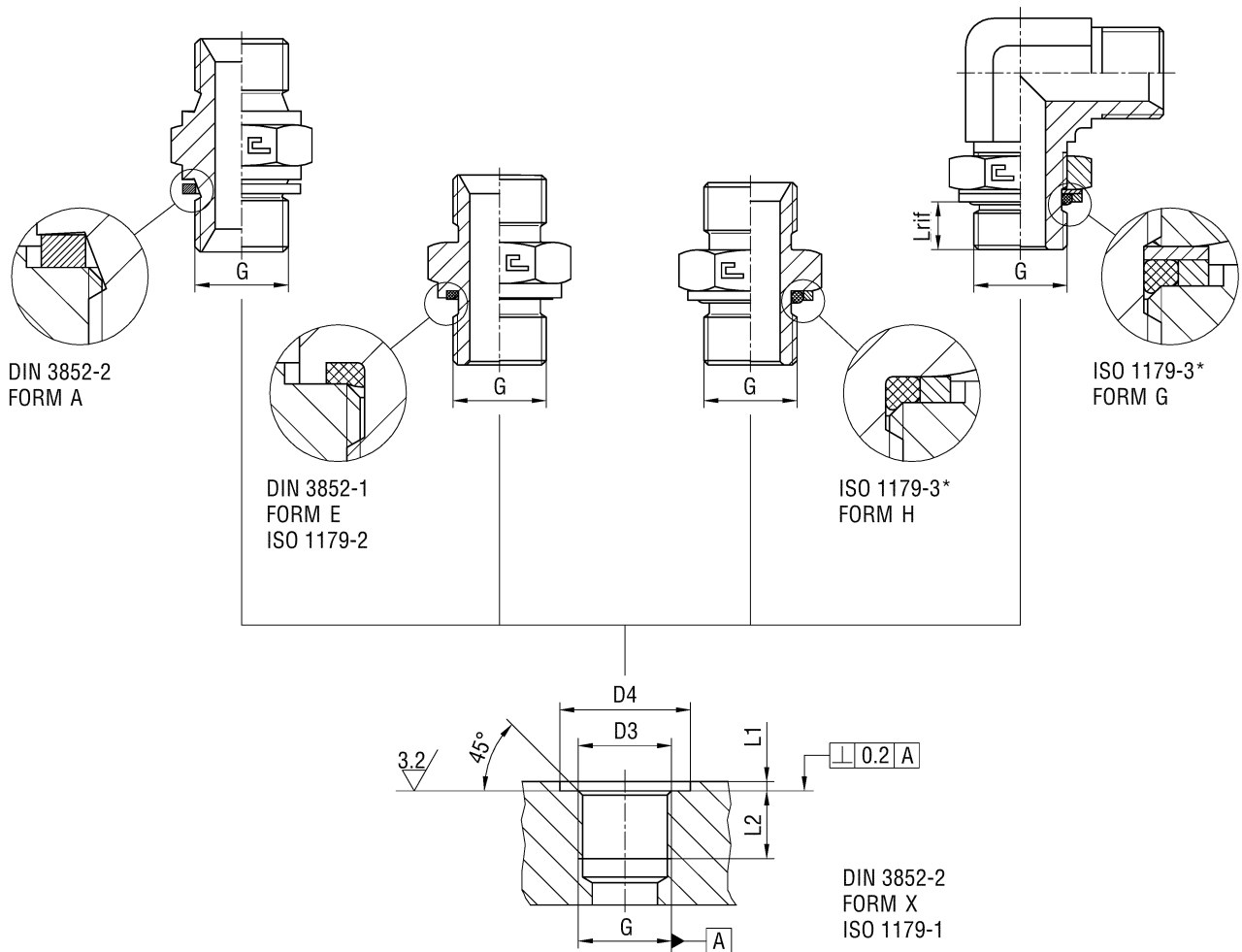


STUD ENDS BSI 5200 WITH BSPP THREAD



| Serie | BSPP Thread | D3 | D4 min form A/E | D4 min form G/H | L1 max | L2 min | L rif | Torque (Nm) form A | Torque (Nm) form E | Torque (Nm) form H | Torque (Nm) form G |
|------------|-------------|------|-----------------|-----------------|--------|--------|-------|--------------------|--------------------|--------------------|--------------------|
| UNIVERSALE | G 1/8 | 9,8 | 15 | 17,2 | 1 | 8 | 7,5 | 20 | 20 | 20 | 20 |
| | G 1/4 | 13,2 | 20 | 20,7 | 1,5 | 12 | 10,2 | 35 | 45 | 45 | 45 |
| | G 3/8 | 16,7 | 23 | 24,5 | 2 | 12 | 10,4 | 70 | 70 | 70 | 70 |
| | G 1/2 | 21 | 28 | 29,6 | 2,5 | 14 | 13,1 | 85 | 85 | 85 | 85 |
| | G 5/8 | 23 | 31 | - | 2,5 | 16 | - | 105 | - | - | - |
| | G 3/4 | 26,5 | 33 | 36,9 | 2,5 | 16 | 13,5 | 120 | 170 | 170 | 170 |
| | G 1 | 33,3 | 41 | 46,1 | 2,5 | 18 | 14,7 | 180 | 330 | 330 | 330 |
| | G 1 1/4 | 42 | 51 | 54 | 2,5 | 20 | 14,7 | 260 | 430 | 430 | 430 |
| | G 1 1/2 | 47,9 | 56 | 60,5 | 2,5 | 22 | 14,7 | 290 | 510 | 510 | 510 |
| G 2 | 59,7 | 69 | 71 | 3 | 26 | 14,7 | 380 | 640 | 640 | 640 | |

Performances:

- Pressure capacity
- Sealing characteristics
- Additional sealing required
- Safety factor

Sealing form A:

Good
Good
no
2,5:1

Sealing form E:

Excellent
Excellent
no
4:1

Sealing form H:

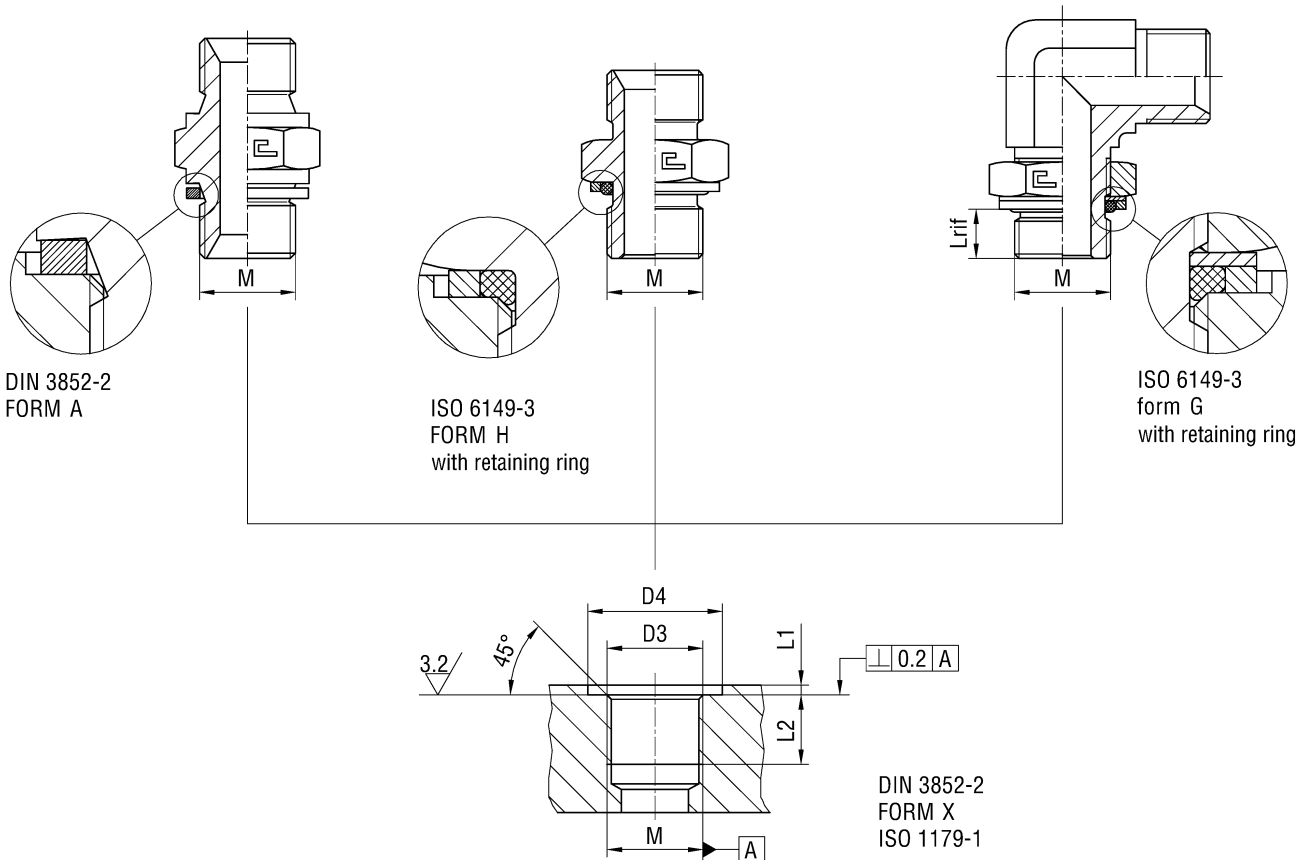
Excellent
Excellent
no
4:1

Sealing form G:

Excellent
Excellent
no
4:1

*In revision phase

STUD ENDS BSI 5200 WITH METRIC THREAD



| Serie | Metric Thread | D3 | D4 min | L1 max | L2 min | L rif | Torque (Nm) forma A | Torque (Nm) forma H | Torque (Nm) forma G |
|------------|---------------|----|--------|--------|--------|-------|---------------------|---------------------|---------------------|
| UNIVERSALE | M10x1 | 10 | 15 | 1 | 8 | 7,6 | 20 | 20 | 20 |
| | M12x1,5 | 12 | 18 | 1,5 | 12 | 9,7 | 30 | 30 | 30 |
| | M14x1,5 | 14 | 20 | 1,5 | 12 | 9,7 | 45 | 45 | 45 |
| | M16x1,5 | 16 | 23 | 1,5 | 12 | 10,2 | 60 | 55 | 55 |
| | M18x1,5 | 18 | 25 | 2 | 12 | 10,9 | 80 | 80 | 80 |
| | M20x1,5 | 20 | 27 | 2 | 14 | - | 105 | - | - |
| | M22x1,5 | 22 | 28 | 2,5 | 14 | 12 | 130 | 120 | 120 |
| | M26x1,5 | 26 | 33 | 2,5 | 16 | - | 160 | - | - |
| | M27x2 | 27 | 33 | 2,5 | 16 | 13,8 | - | 170 | 170 |
| | M30x1,5 | 30 | 37 | 2,5 | 12 | - | 190 | - | - |
| | M33x2 | 33 | 41 | 2,5 | 18 | 13,8 | - | 330 | 330 |
| | M38x1,5 | 38 | 45 | 2,5 | 14 | - | 230 | - | - |
| M45x1,5 | 45 | 53 | 2,5 | 14 | - | 280 | - | - | |

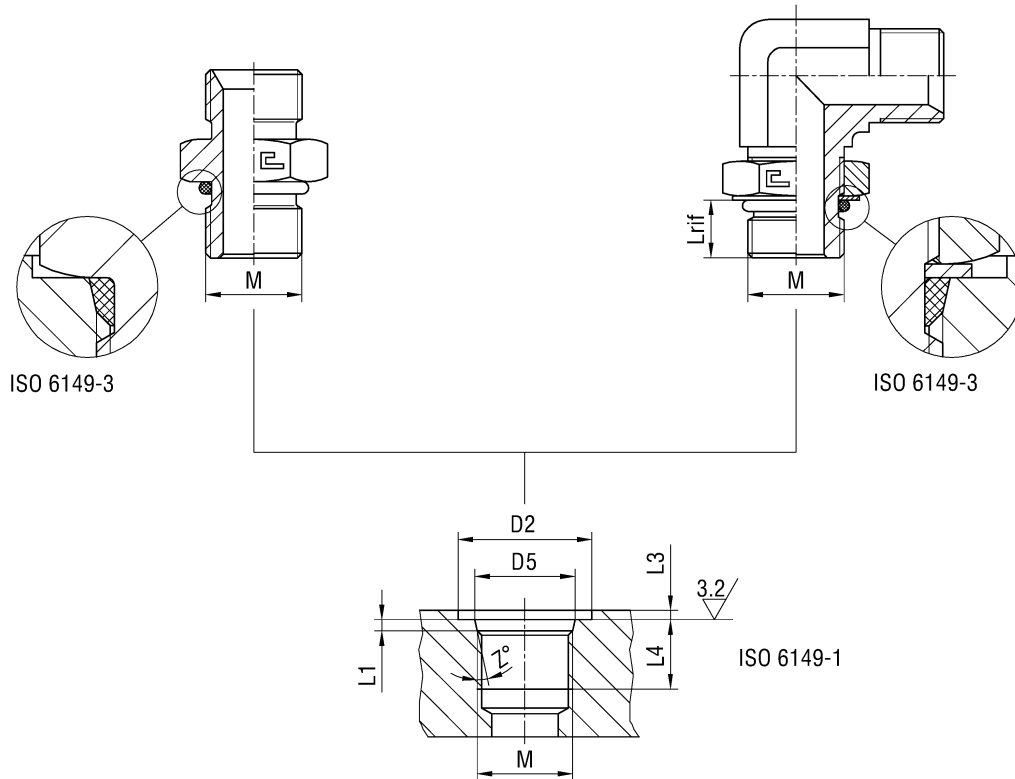
Performances:
 - Pressure capacity
 - Sealing characteristics
 - Additional sealing required
 - Safety factor

Sealing form A:
 Good
 Good
 no
 2,5:1

Sealing form H:
 Excellent
 Excellent
 no
 4:1

Sealing form G:
 Excellent
 Excellent
 no
 4:1

STUD ENDS BSI 5200 WITH METRIC THREAD (ISO 6149)



| Serie | P max ISO 6149 STRAIGHT | P max ISO 6149 ADJUSTABLE | Metric Thread | D2 min | D5 | L1 | L3 max | L4 min | L rif | Z° | Torque (Nm) ISO 6149 STRAIGHT | Torque (Nm) ISO 6149 ADJUSTABLE |
|-----------|-------------------------------|---------------------------------|------------------|-----------|------|-----|-----------|-----------|----------|----|-------------------------------------|---------------------------------------|
| UNIVERSAL | 400 | 315 | M10x1 | 16 | 11,1 | 1,6 | 1 | 10 | 8,6 | 12 | 15 | 15 |
| | 400 | 315 | M12x1,5 | 19 | 13,8 | 2,4 | 1,5 | 11,5 | 11,1 | 15 | 25 | 25 |
| | 400 | 315 | M14x1,5 | 21 | 15,8 | 2,4 | 1,5 | 11,5 | 11,1 | 15 | 30 | 30 |
| | 315 | 250 | M16x1,5 | 24 | 17,8 | 2,4 | 1,5 | 13 | 11,6 | 15 | 35 | 35 |
| | 315 | 250 | M18x1,5 | 26 | 19,8 | 2,4 | 2 | 14,5 | 12,3 | 15 | 40 | 40 |
| | 315 | 250 | M22x1,5 | 29 | 23,8 | 2,4 | 2 | 15,5 | 13,4 | 15 | 55 | 55 |
| | 200 | 160 | M27x2 | 34 | 29,4 | 3,1 | 2 | 19 | 15,8 | 15 | 85 | 85 |
| | 200 | 160 | M33x2 | 43 | 35,4 | 3,1 | 2,5 | 19 | 15,8 | 15 | 140 | 140 |

Performances:

- Pressure capacity
- Sealing characteristics
- Additional sealing required
- Safety factor

STRAIGHT sealing:

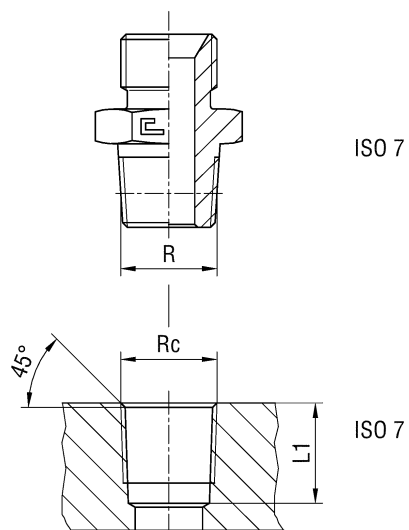
Excellent
Excellent
no
4:1

ADJUSTABLE sealing:

Excellent
Excellent
no
4:1

N.B. To obtain the ISO 6149 type of sealing please take out the retaining ring from the standard fitting.

246. STUD ENDS BSI 5200 WITH BSPT THREAD

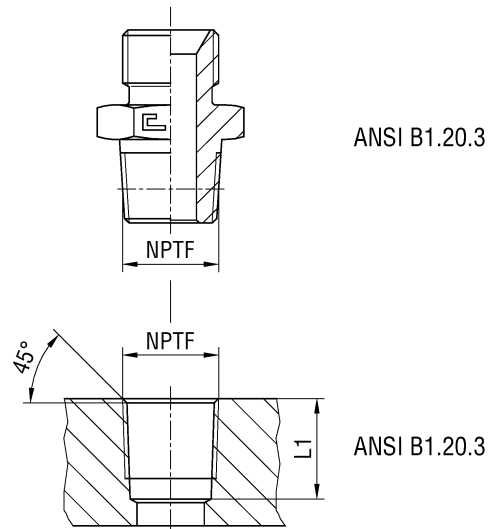


| Serie | BSPT Thread | L1 |
|-----------|-------------|------|
| UNIVERSAL | R 1/8 | 7,4 |
| | R 1/4 | 11 |
| | R 3/8 | 11,4 |
| | R 1/2 | 15 |
| | R 3/4 | 16,3 |
| | R 1 | 19,1 |
| | R 1 1/4 | 21,4 |
| | R 1 1/2 | 21,4 |
| | R 2 | 25,7 |

Performances:
 - Pressure capacity
 - Sealing characteristics
 - Additional sealing required
 - Safety factor

Taper sealing:
 Low-Medium
 Low-Medium
 yes
 2,5:1

STUD ENDS BSI 5200 WITH NPTF THREAD



| Serie | NPTF Thread | L1 |
|-----------|-----------------|------|
| UNIVERSAL | 1/8-27 NPTF | 11,6 |
| | 1/4-18 NPTF | 16,4 |
| | 3/8-18 NPTF | 17,4 |
| | 1/2-14 NPTF | 22,6 |
| | 3/4-14 NPTF | 23,1 |
| | 1-11,5 NPTF | 27,8 |
| | 1 1/4-11,5 NPTF | 28,3 |
| | 1 1/2-11,5 NPTF | 28,3 |
| | 2-11,5 NPTF | 29 |

Performances:

- Pressure capacity
- Sealing characteristics
- Additional sealing required
- Safety factor

Taper sealing:

Low-Medium
 Low-Medium
 yes
 2,5:1