



Y.N.

Y.N. PIPE COUPLING FROM MANUFACTURING TO USE



▲ READY FOR EXPORT SHIPMENT AFTER ASSEMBLING TO SPECIAL RUBER SLEEVES



▲ READY FOR EXPORT SHIPMENT OF 300 SETS OF 400A COUPLINGS



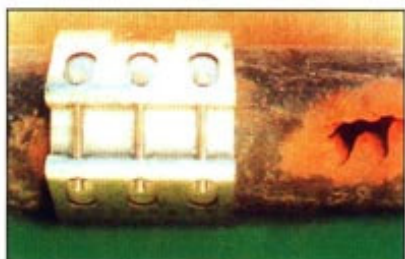
▲ READY FOR EXPORT SHIPMENT OF 1500A COUPLINGS



▲ COMPLETION OF CONNECTION WITH STEEL PIPE & DUCTILE PIPE



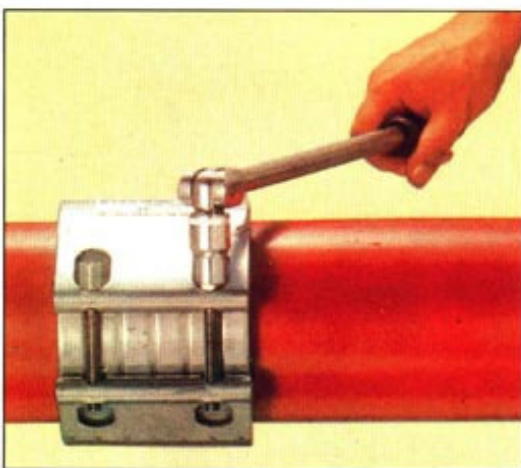
▲ ABOVE-GROUND LINE FOR LARGE WATER SUPPLY PIPELINES



▲ REPAIR OF HOLED PIPE FOR WATER SUPPLY AND DRAINAGE PIPELINES



▲ EMERGENCY REPAIR SITE FOR UNDERGROUND WATER SUPPLY LINE



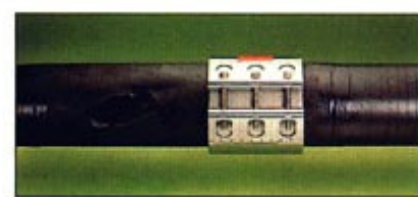
▲ COMPLETION OF REPAIR WITH REPAIR CLAMP(100% WATERTIGHT PROVED)



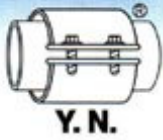
▲ COMMENCEMENT OF INSTALLATION →



▲ HOLES ON EXISTING PIPELINE →



▲ COMPLETION OF INSTALLATION



Y.N. PIPE COUPLING FROM MANUFACTURING TO SITE



▲ LARGE WATER SUPPLYING PIPELINES



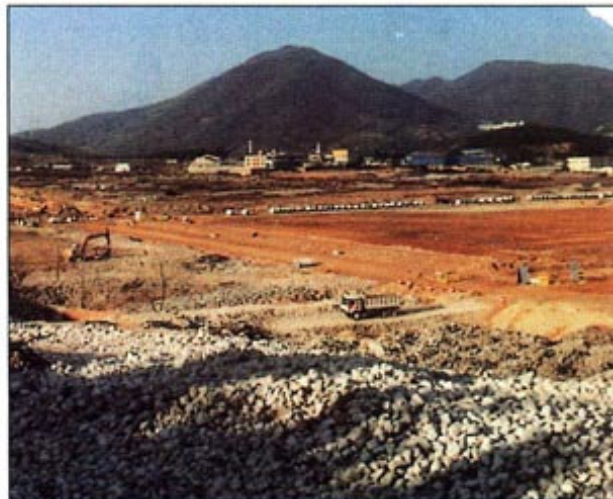
▲ UNDERGROUND PIPELINES



▲ DRAIN PIPELINES ON LARGE BRIDGE FOR VIBRATION-PROOF



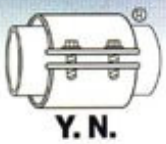
▲ REPAIR OF A LEAKING WATER SUPPLY LINE IN AN APARTMENT BUILDING



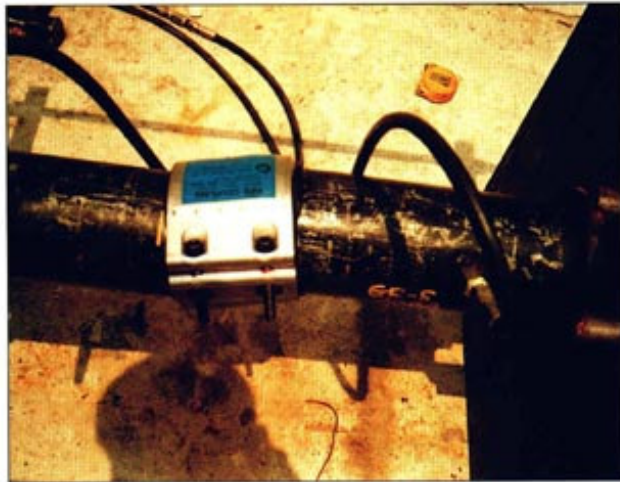
▲ TEMPORARY USE ON THE SITE OF LARGE INDUSTRIAL



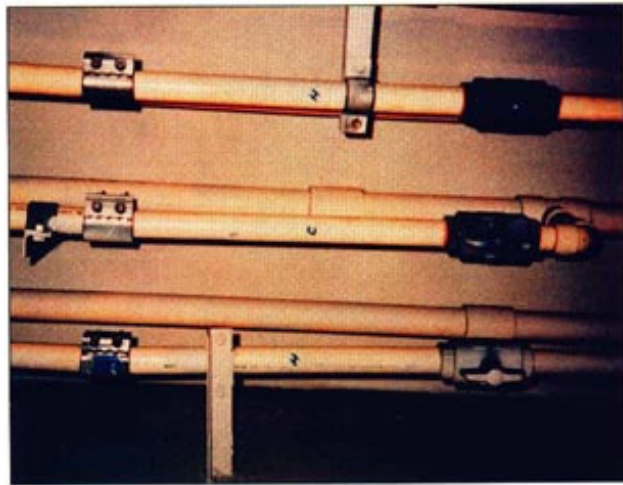
▲ TRANSPORTING LINES FOR SAND



Y.N. PIPE COUPLING FROM MANUFACTURING TO SITE



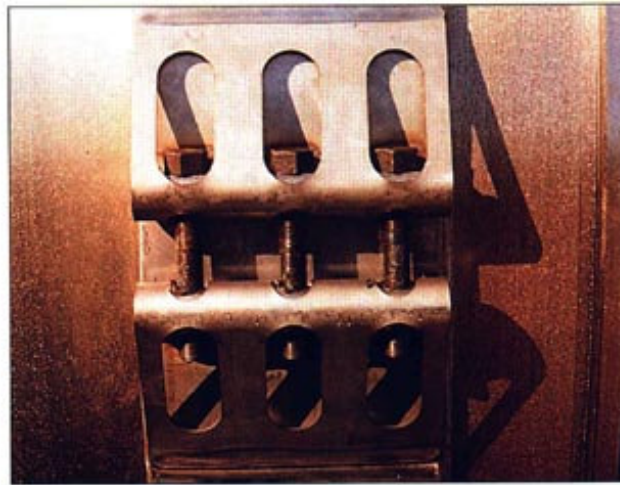
▲ NO LEAK FOUND ON TWISTED PIPELINE



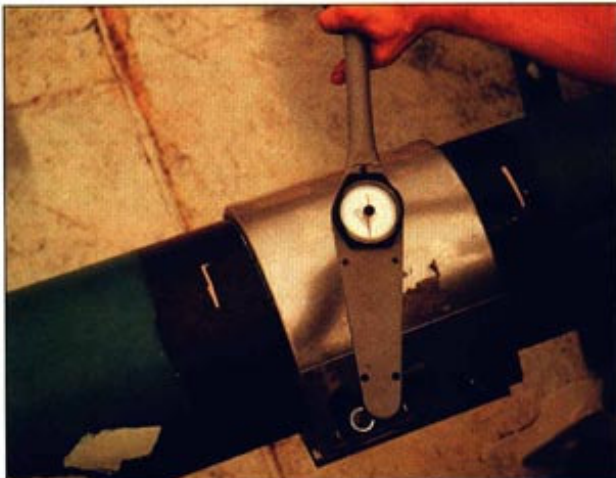
▲ INSTALLED COUPLINGS ON PVC PIPES FOR HOT WATER SUPPLY LINES ON A NEW PASSENGER SHIP



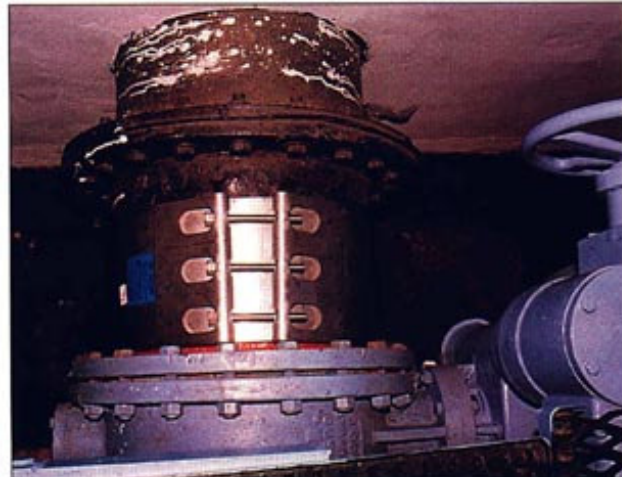
▲ VIEW OF INSTALLING A REPAIR CLAMP(RC-L) ON 500mm DIAMETER PIPE WITH SPECIAL BELT



▲ VIEW OF A COUPLING ASSEMBLED ON 2044mm DIAMETER CAST IRON PIPE EXPORTED TO SAUDI ARABIA FOR LARGE WATER WORKS



▲ VIEW OF OXYGEN LINE ON THE SHIP



▲ VIEW OF A 500mm COUPLING INSTALLED ON WATER SUPPLY LINE AT LARGE WATERWORKS