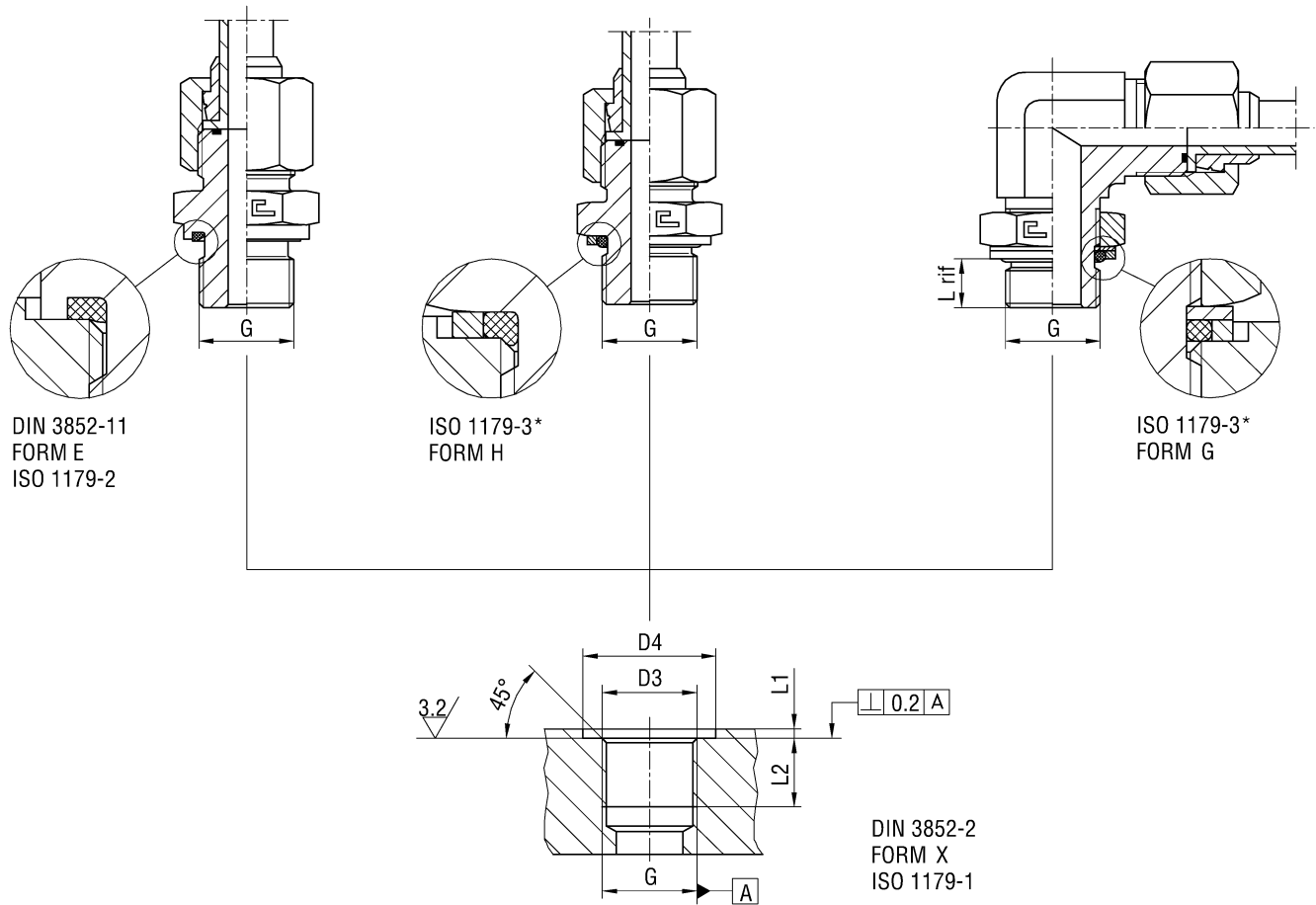


**STUD ENDS SAE J1453 WITH BSPP THREAD**



Serie	ØTube	BSPP Thread	D3	D4 min form E	D4 min form G/H	L1 max	L2 min	L rif	Torque (Nm) +10% form E	Torque (Nm) +10% form H	Torque (Nm) +10% form G
UNIVERSAL	6	G 1/8	9,8	15	17,2	1	8	7,5	20	20	20
	8-10	G 1/4	13,2	20	20,7	1,5	12	10,2	55	55	55
	12	G 3/8	16,7	23	24,5	2	12	10,4	80	80	80
	14-15-16	G 1/2	21	28	29,6	2,5	14	13,1	110	110	110
	18-20	G 3/4	26,5	33	36,9	2,5	16	13,5	170	170	170
	22-25	G 1	33,3	41	46,1	2,5	18	14,7	330	330	330
	28-30-32	G 1 1/4	42	51	54	2,5	20	14,7	430	430	430
	35-38	G 1 1/2	47,9	56	60,5	2,5	22	14,7	510	510	510

**Performances:**

- Pressure capacity
- Sealing characteristics
- Additional sealing required
- Safety factor

**Sealing form E:**

- Excellent
- Excellent
- No
- 4:1

**Sealing forma H:**

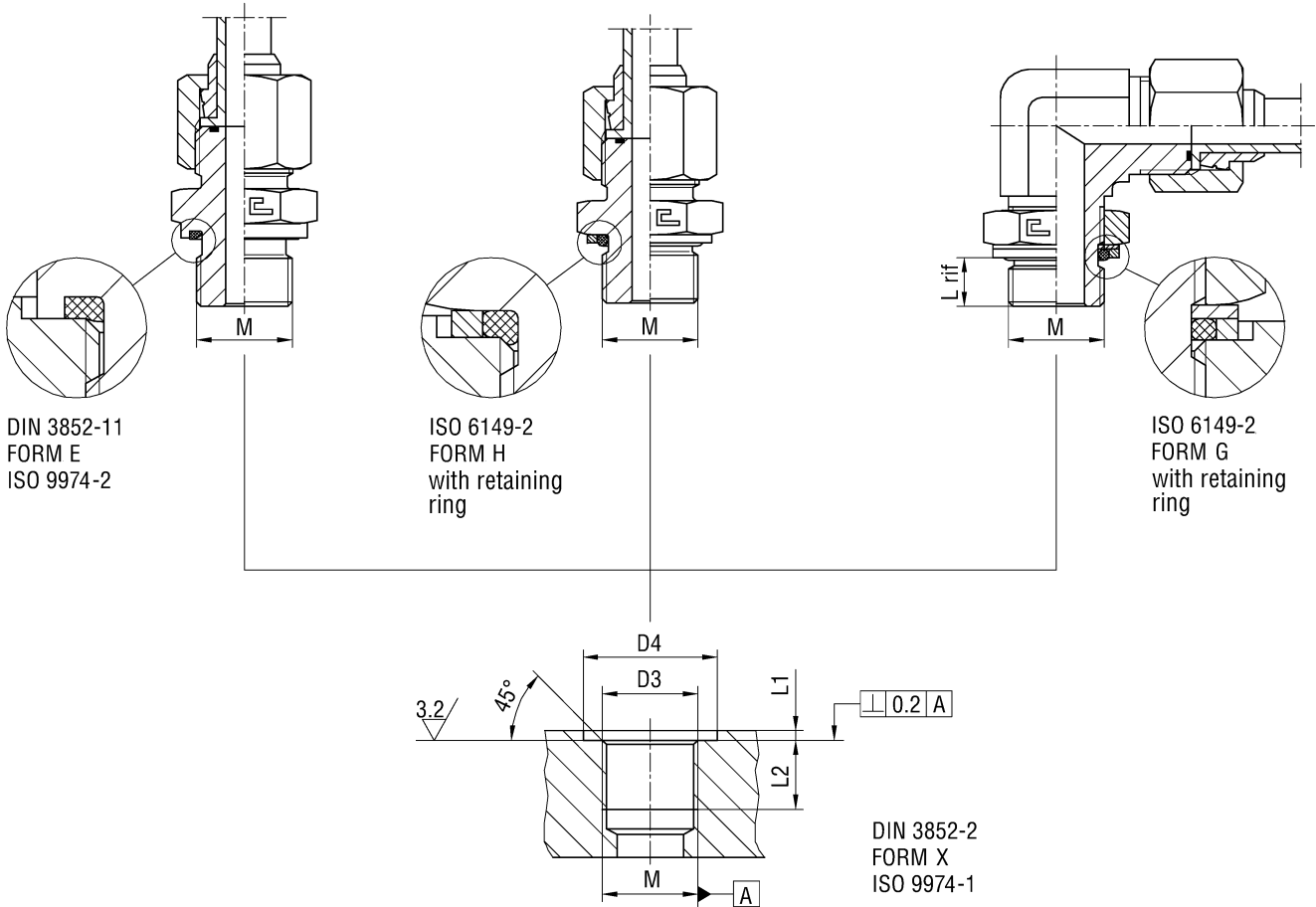
- Excellent
- Excellent
- No
- 4:1

**Sealing form G:**

- Excellent
- Excellent
- No
- 4:1

**Notes:** Assembly torque values shown in the table referred to carbon steel coupling only.  
For stainless steel fittings, please take away in consideration the maximum values indicated.  
\*In revision phase

**STUD ENDS SAE J1453 WITH METRIC THREAD**



Serie	ØTube	Metric Thread	D3	D4 min form E	D4 min ISO 6149	L1 max	L2 min	L rif	Torque (Nm) +10% form E	Torque (Nm) +10% form H	Torque (Nm) +10% form G
UNIVERSAL	6	M10x1	10	15	16	1	8	7,6	20	20	20
	8-10	M12x1,5	12	18	19	1,5	12	9,7	40	40	40
	8-10	M14x1,5	14	20	21	1,5	12	9,7	55	55	55
	12	M16x1,5	16	23	24	1,5	12	10,2	70	70	70
	14-15-16	M18x1,5	18	25	26	2	12	10,9	85	85	85
	14-15-16	M20x1,5	20	27	27	2	14	12	120	120	120
	14-15-16	M22x1,5	22	28	29	2,5	14	12	130	130	130
	18-20	M27x2	27	33	34	2,5	16	13,8	170	170	170
	22-25	M33x2	33	41	43	2,5	18	13,8	330	330	330
	28-30-32	M42x2	42	51	52	2,5	22	13,8	430	430	430
	35-38	M48x2	48	56	57	2,5	22	15,3	510	510	510

**Performances:**

- Pressure capacity
- Sealing characteristics
- Additional sealing required
- Safety factor

**Sealing form E:**

Excellent  
Excellent  
No  
4:1

**Sealing forma H:**

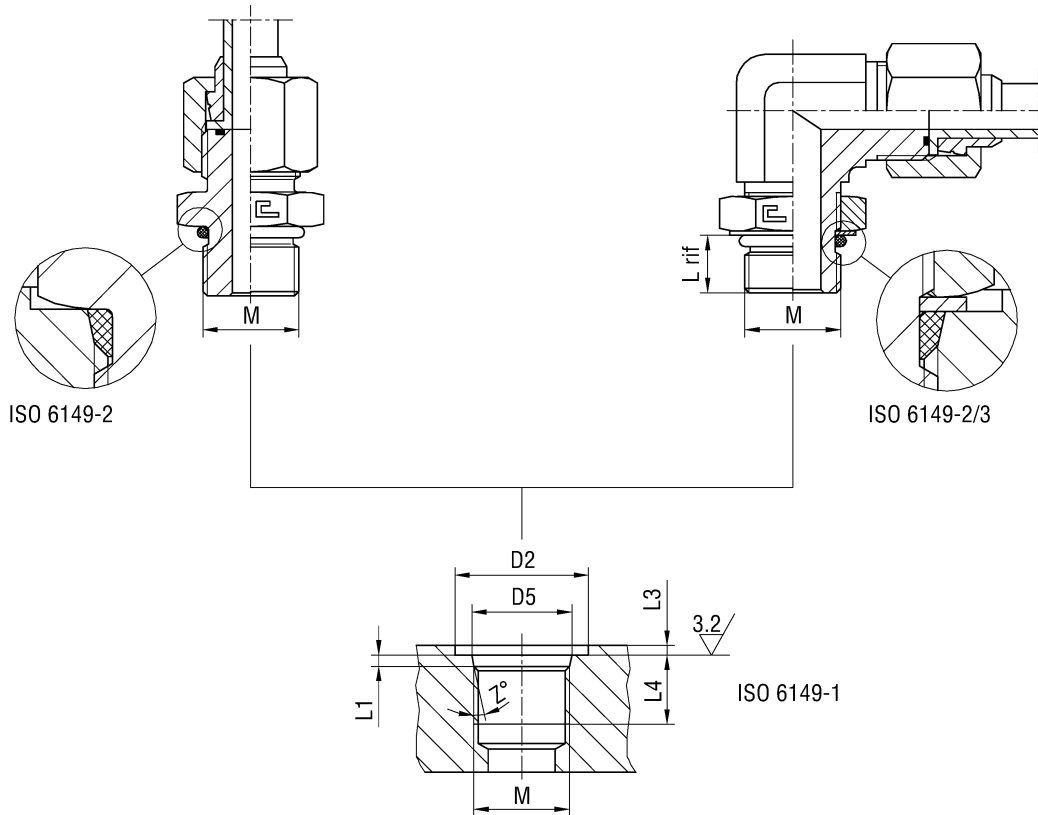
Excellent  
Excellent  
No  
4:1

**Sealing form G:**

Excellent  
Excellent  
No  
4:1

**Notes:** Assembly torque values shown in the table referred to carbon steel coupling only. For stainless steel fittings, please take away in consideration the maximum values indicated.

STUD ENDS SAE J1453 WITH METRIC THREAD (ISO 6149)



Serie	P max ISO 6149 STRAIGHT	P max ISO 6149 ADJUSTABLE	ØTube	Metric Thread	D2 min	D5	L1	L3 max	L4 min	L rif	Z°	Torque (Nm) ISO 6149 +10% STRAIGHT	Torque (Nm) ISO 6149 +10% ADJUSTABLE
UNIVERSAL	630	400	6	M10x1	16	11,1	1,6	1	10	8,6	12	15	15
	630	400	8-10	M12x1,5	19	13,8	2,4	1,5	11,5	11,1	15	30	30
	630	400	8-10	M14x1,5	21	15,8	2,4	1,5	11,5	11,1	15	40	40
	630	400	12	M16x1,5	24	17,8	2,4	1,5	13	11,6	15	50	50
	630	400	14-15-16	M18x1,5	26	19,8	2,4	2	14,5	12,3	15	60	60
	400	400	14-15-16	M20x1,5	27	21,8	2,4	2	14,5	13,4	15	70	70
	400	400	14-15-16	M22x1,5	29	23,8	2,4	2	15,5	13,4	15	85	85
	400	400	18-20	M27x2	34	29,4	3,1	2	19	15,8	15	150	150
	400	315	22-25	M33x2	43	35,4	3,1	2,5	19	15,8	15	260	260
	250	250	28-30-32	M42x2	52	44,4	3,1	2,5	19,5	15,8	15	280	280
250	250	35-38	M48x2	57	50,4	3,1	2,5	22	17,3	15	360	360	

Performances:

- Pressure capacity
- Sealing characteristics
- Additional sealing required
- Safety factor

STRAIGHT sealing:

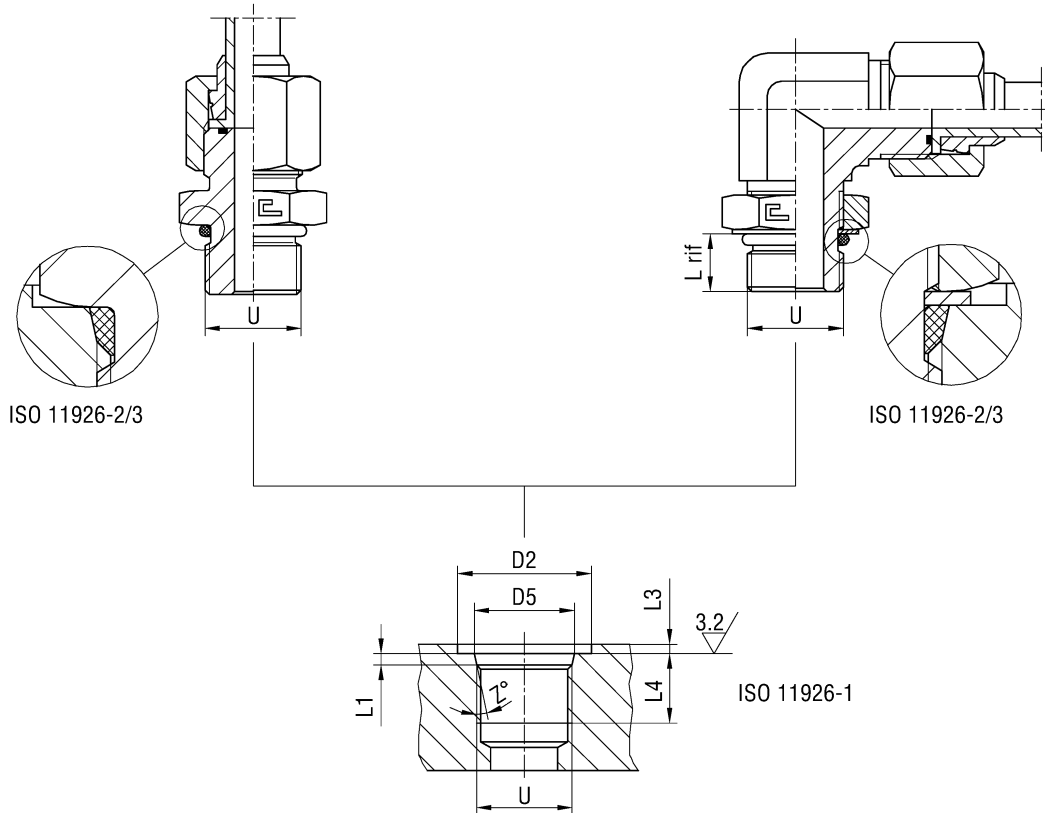
- Excellent
- Excellent
- No
- 4:1

ADJUSTABLE sealing:

- Excellent
- Excellent
- No
- 4:1

Notes: Assembly torque values shown in the table referred to carbon steel coupling only. For stainless steel fittings, please take away in consideration the maximum values indicated.

**STUD ENDS SAE J1453 WITH UNF/UN-2A THREAD**



Serie	ØTube	UNF/UN2A Thread	D2 min	D5	L1	L3 max	L4 min	L rif	Z°	Torque (Nm) +10% STRAIGHT	Torque (Nm) +10% ADJUSTABLE
UNIVERSAL	6	7/16-20 UNF-2A	21	12,45	2,4	1,6	11,5	9,9	12	20	20
	8-10	1/2-20 UNF-2A	23	14,05	2,4	1,6	11,5	9,9	12	25	25
	8-10	9/16-18 UNF-2A	25	15,7	2,5	1,6	12,7	11,1	12	35	55
	12	3/4-16 UNF-2A	30	20,65	2,5	2,4	14,3	12,5	15	60	60
	14-15-16	7/8-14 UNF-2A	34	24	2,5	2,4	16,7	14,5	15	85	85
	18-20	1 1/16-12 UN-2A	41	29,2	3,3	2,4	19	16,8	15	150	150
	22-25	5/16-12 UN-2A	49	35,55	3,3	3,2	19	16,8	15	230	230
	28-30-32	1 5/8-12 UN-2A	58	43,55	3,3	3,2	19	16,8	15	250	250
35-38	1 7/8-12 UN-2A	65	49,9	3,3	3,2	19	16,8	15	320	320	

**Performances:**

- Pressure capacity
- Sealing characteristics
- Additional sealing required
- Safety factor

**STRAIGHT sealing:**

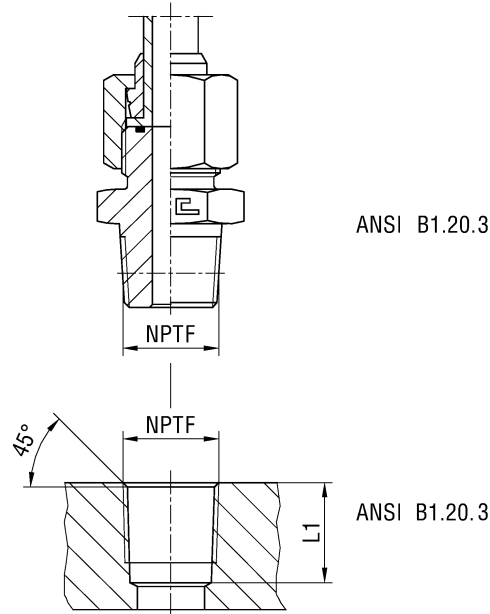
- Excellent
- Excellent
- No
- 4:1

**ADJUSTABLE sealing:**

- Excellent
- Excellent
- No
- 4:1

**Notes:** Assembly torque values shown in the table referred to carbon steel coupling only. For stainless steel fittings, please take away in consideration the maximum values indicated.

STUD ENDS SAE J1453 WITH NPTF THREAD



Serie	ØTube	NPTF Thread	L1
UNIVERSAL	6	1/8-27 NPTF	11,6
	8-10	1/4-18 NPTF	16,4
	12	3/8-18 NPTF	17,4
	14-15-16	1/2-14 NPTF	22,6
	18-20	3/4-14 NPTF	23,1
	22-25	1-11,5 NPTF	27,8
	28-30-32	1 1/4-11,5 NPTF	28,3
	35-38	1 1/2-11,5 NPTF	28,3

**Performances:**  
 - Pressure capacity  
 - Sealing characteristics  
 - Additional sealing required  
 - Safety factor

**Taper sealing:**  
 Low-Medium  
 Low-Medium  
 Yes  
 2,5:1